



# Roxtec LabSeal™ C LTX

Easy-to-clean transit for labs and cleanrooms.

The Roxtec LabSeal™ is optimized for cable and pipe penetrations in airtight facilities such as laboratories and cleanrooms. It is hygienically designed with an easy-to-clean powder-coated aluminum frame and a smooth surface with drainable edges, integrated compression units and hidden mounting screws. The lightweight and area efficient transit is easy to install. It ensures an airtight seal when attached to the wall or ceiling and provides spare capacity for future upgrades.



- 빠르고 간편한 설치
- 유지 및 검사 용이
- 예비 공간 포함 제공
- 모듈식 설계

## 제품 특징점



내화



IP/UL NEMA

## 설치 구조



샌드위치



석고

## 장착 유형



볼트 체결

## 등급 및 인증

### 화재

- EN 13501에 따른 E/ТИ 등급

### 강도

- IEC 60529에 따른 IP 66/67

## 프레임 치수

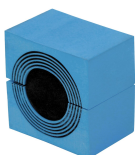
mm/kg

아래의 프레임 변화는 제한된 선택입니다. 프레임 및 구성의 전체 범위를 보려면 [roxtec.com](https://www.roxtec.com)을 방문하십시오.

구성	프레임 입구	모듈설치공간	외부 치수 WxHxD	홀 치수 w x h	무게	Art. 번호
LABSEAL C LTX WITH COUNTER FRAME 0-40	2	60 x 180	201 x 296 x 86	165(+2/-1) x 261(+2/-1)	2.9	241407
LABSEAL C LTX WITH EXT. FRAME 90-100	2	60 x 180	201 x 296 x 146	165(+2/-1) x 261(+2/-1)	3.5	244894

## 씰링 컴포넌트 데이터

### 씰링 컴포넌트



CM 모듈(Multidiometer™)

자세한 내용은 [roxtec.com](https://www.roxtec.com)을 방문하십시오.



# 키트 구성의 관통장비

mm/kg



구성	구성	외부 치수 WxHxD	홀 치수 w x h	무게	Art. 번호
LABSEAL C LTX/6	6x (24.0-54.0)	201 x 296 x 146	165(+2/-1) x 261(+2/-1)	4.5	246143
LABSEAL C LTX/15	12x (10.0-25.0), 3x (24.0-54.0)	201 x 296 x 146	165(+2/-1) x 261(+2/-1)	4.5	246142
LABSEAL C LTX/24	24x (10.0-25.0)	201 x 296 x 146	165(+2/-1) x 261(+2/-1)	4.5	246141

The product information provided by Roxtec does not release the purchaser of the Roxtec system, or part thereof, from the obligation to independently determine the suitability of the products for the intended process, installation and/or use.

Roxtec gives no guarantee for the Roxtec system or any part thereof and assumes no liability for any loss or damage whatsoever, whether direct, indirect, consequential, loss of profit or otherwise, occurred or caused by the Roxtec systems or installations containing components not manufactured by an authorized manufacturer and/or occurred or caused by the use of the Roxtec system in a manner or for an application other than for which the Roxtec system was designed or intended.

Roxtec expressly excludes any implied warranties of merchantability and fitness for a particular purpose and all other express or implied representations and warranties provided by statute or common law. User determines suitability of the Roxtec system for intended use and assumes all risk and liability in connection therewith. In no event shall Roxtec be liable for indirect, consequential, punitive, special, exemplary or incidental damages or losses.

The Roxtec products are offered and sold in accordance with the conditions of the Roxtec General Terms of Sales. The latest version of the Roxtec General Terms of Sales can be downloaded from <https://www.roxtec.com/en/about-us/about-roxtec/general-terms-of-sales/>

We reserve the right to make changes to the product and technical information without further notice. Any errors in print or entry are no claims for indemnity. The content of this publication is the property of Roxtec International AB and is protected by copyright.

This document was generated on: 2025-12-01